

2 & 3 JAW HYDRAULIC PULLERS

How To Choose a Puller



When buying a puller it is important to consider 3 basic specifications: Reach, Spread and Capacity.

“A” Reach

Reach is the distance from the base of the hub to the flats of the jaws. This must be greater than the distance from the end of the shaft to behind the item being pulled. The maximum reach of each puller is always given.

“B” Spread

Spread is the distance between the jaws. This must be greater than the diameter of the item being pulled.

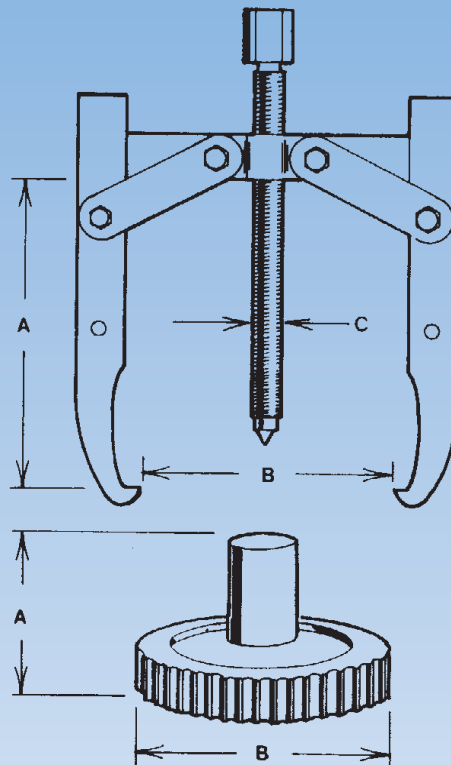
“C” Capacity

Capacity is the amount of force each puller is capable of safely exerting.

For Hydraulic Pullers: 8-12 tons of pressure are required for each inch of shaft diameter.

CAUTION NOTICE

The operation of a puller represents the application of considerable amounts of power, often measured in TONS. For this reason it is necessary to take certain precautions.



Always wear Safety Glasses.

Keep forcing screw and hub threads, clean and oiled.

Do not heat or grind puller parts. This will cause loss of strength and void the warranty.

Be sure puller is aligned and kept from cocking.

Do not use cheaters or extend wrenches.

Cover or shield work area to prevent parts from flying.

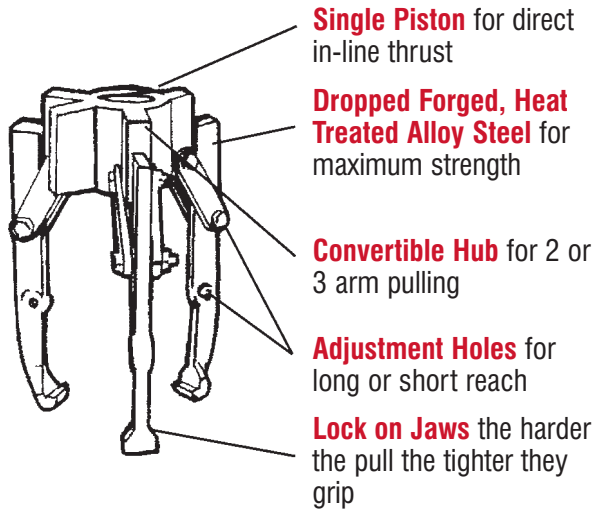
When possible, use the next larger size puller to prevent overloading.

Adapter and attachments are rated at various capacities. When used with a puller of larger capacity, never exceed the capacity of the smallest adapter.

10 TON 2/3-JAW CONVERTIBLE PULLER

Made in USA

Combine the ease and speed of hydraulic power with the versatility of these 10-TON HYDRAGRIP PULLERS. Jaw pullers feature a convertible hub for 2 or 3 jaw pulling. All are quality made to give dependable trouble-free service. Save time and money with these lightweight easy to handle hydraulic pullers.



10 TON 2/3 JAW CONVERTIBLE PULLER SPECIFICATIONS

Rated Load (ton)	Number of Jaws	Spread (in)	Maximum Reach Under Cylinder (in)	Type of Hand Pump*	Type of Cylinder †	Weight (lb)	Model Number
10	2-3 Convertible	0 to 12	Short 6 15/16 Long 9	—	—	27	P-10-01-23
10	2-3 Convertible	0 to 12	Short 6 15/16 Long 9	—	RC-10-SA-6	53	PH-10-01-23
10	2-3 Convertible	0 to 12	Short 6 15/16 Long 9	HP-55	RC-10-SA-6	69	PHS-10-01-23

* See page 15 for pump description. Set also includes six-foot hydraulic hose.

** Includes adapter head HA-106 (page 36).

† See page 2 and 3 for cylinder description.

HAND PUMP SPECIFICATIONS

Rated Load Puller/ Press Puller (ton)	Hand Pump Model Number	Pump Plunger Dia. (in)	Pump Plunger Stroke (in)	Pump Plunger Displacement (in ³)	Usable Oil Capacity (in ³)	Handle Length (in)	Pump Length (in)	Pump Width (in)	Pump Height (in)	Pump Weight (lb)
10/20/30	HP-55	1/2	1	0.19	37	20	24 1/2	5 1/2	6 1/4	16
60	HP-150	1/2	1	0.19	143	20	26 1/2	7	7 3/8	29
		1		0.78						
60†	HP-520	1/2	1 1/2	0.28	24	24	25**	11	11	57
		2 5/8		8.1						
10/20/30/60‡	HUP-180	—	—	—	106	—	6 1/2	6 1/2	16 1/4	41

† Optional hand-powered unit. Available on request.

‡ Optional electric-powered unit. Available on request.

* Without handle

HYDRAULIC PULLERS 2-JAW

Flexibility for a wide spectrum of light to heavy-duty pulling tasks.

FEATURES

- Choice of two or three-jaw models
- Adjustable puller jaws for maximum flexibility
- Forged, heat-treated alloy steel jaws provide maximum strength
- Unique jaw design strengthens grip as pulling force increases, minimizing slippage
- May be ordered as individual components, puller/cylinder units, or complete operating sets consisting of puller, cylinder, coupling, six foot hose and RAM-PAC® hydraulic hand pump or portable power pump

All pullers come standard with adjusting screw and crank.



SPECIFICATIONS

Rated Load (ton)	Number of Arms	Spread (in)	Maximum Reach Under Cylinder (in)	Type of Hand Pump*	Type of Cylinder †	Weight (lb)	Model Number
20	2	16	11 ½	–	–	27	P-20-01-02
20	2	16	11 ½	–	RC-20-CH-3ST	53	PH-20-01-02
20	2	16	11 ½	HP-55	RC-20-CH-3ST	69	PHS-20-01-02
30	2	26	19 ⅞	–	–	45	P-30-01-02
30	2	26	19 ⅞	–	RC-30-CH-2.5ST	81	PH-30-01-02
30	2	26	19 ⅞	HP-55	RC-30-CH-2.5ST	96	PHS-30-01-02
60	2	36	28 ¼	–	–	164	P-60-01-02
60	2	36	28 ¼	–	RC-60-CH-3 ST	226	PH-60-01-02
60	2	36	28 ¼	HP-150	RC-60-CH-3 ST	256	PHS-60-01-02

2-Jaw pullers are available as puller only with no hydraulics, puller with hydraulic cylinder or as puller with cylinder, hand pump and 6-foot hose. See chart on the left.

* See page 15 for pump description. Set also includes HAC-86-72 six-foot hydraulic hose.
 † See page 10 for cylinder description.

HYDRAULIC PULLERS 3-JAW

CAUTION

For better leverage and even distribution of force, use a three-jaw puller whenever clearance permits. Always use safety glasses when operating hydraulic equipment. Make sure load is aligned to keep pull in a straight line.



3-Jaw pullers are available as puller only with no hydraulics, puller with hydraulic cylinder or as puller with cylinder, hand pump and 6-foot hose. See chart below.

SPECIFICATIONS

Rated Load (ton)	Number of Arms	Spread (in)	Maximum Reach Under Cylinder (in)	Type of Hand Pump*	Type of Cylinder †	Weight (lb)	Model Number
20	3	20	11 ½	—	—	39	P-20-01-03
20	3	20	11 ½	—	RC-20-CH-3ST	65	PH-20-01-03
20	3	20	11 ½	HP-55	RC-20-CH-3ST	81	PHS-20-01-03
30	3	35	19 ⅞	—	—	66	P-30-01-03
30	3	35	19 ⅞	—	RC-30-CH-2.5ST	102	PH-30-01-03
30	3	35	19 ⅞	HP-55	RC-30-CH-2.5ST	117	PHS-30-01-03
60	3	44	28 ¼	—	—	213	P-60-01-03
60	3	44	28 ¼	—	RC-60-CH-3ST	275	PH-60-01-03
60	3	44	28 ¼	HP-150	RC-60-CH-3ST	305	PHS-60-01-03

* See page 15 for pump description. Set also includes HAC-86-72 six-foot hydraulic hose.

† See page 10 for cylinder description.

HYDRAULIC PULLER SETS

20 TON INDUSTRIAL SET



30 TON HEAVY DUTY SET



60 TON EXTRA HEAVY DUTY SET



07-523	20 Ton Industrial Set
HP-55	Hand Pump
RC-20-CH-3ST	20 Ton Cylinder
HA-86-72	High Pressure Hose
HA-17	Hose Coupler
P-20-01-03	20-Ton, 3-Jaw Puller
93-372	20-Ton, 2-Jaw, Hub
P-20-02	20-Ton Press Puller
07-448	20" x 1-8 Adjusting Screw
07-449	Crank Handle
07-441	1/2" Pushing Adapter
HA-91	Gauge Tee
HA-90	Gauge
IP-20-02	1 1/2-6" Spread Internal Puller
BS-20-02	1/2 -6" Bearing Separator
LS-20-02	22 1/2" Legs for Press-Puller (PR)
08-730	1-8F x 5/8-18M Adapter
08-752	5/8-18 F x 3/4-16F Adapter (2)

Wt. 126 lbs.

07-535	30 Ton Heavy Duty Set
HP-55	Hand Pump
RC-30-CH-2.5ST	30 Ton Cylinder
HA-86-72	High Pressure Hose
HA-17	Hose Coupler
P-30-01-03	30-Ton, 3-Jaw Puller
93-382	30-Ton, 2-Jaw, Hub
P-30-02	30-Ton Press Puller
07-468	24" x 1 1/4-7 Adjusting Screw
07-449	Crank Handle
07-462	3/4" Pushing Adapter
HA-91	Gauge Tee
HA-90	Gauge
IP-30-02	3-9" Spread Internal Puller
BS-30-02	3/4 - 7 1/2" Bearing Separator
LS-30-02	28" Legs for Press-Puller (PR)
08-758	1 -14F x 1 -14F Adapter (2)

Wt. 238 lbs.

07-565	60 Ton Extra Heavy Duty Set
HP-150	Hand Pump
RC-60-CH-3ST	60 Ton Cylinder
HA-86-72	High Pressure Hose
HA-17	Hose Coupler
P-60-01-03	60-Ton, 3-Jaw Puller
93-392	60-Ton, 2-Jaw, Hub
P-60-02	60-Ton Press Puller
07-488	30" x 1 5/8-5 1/2 Adjusting Screw
07-489	Crank Handle
07-483	1" Pushing Adapter
HA-91	Gauge Tee
HA-90	Gauge
BS-60-02	1 1/4 - 10" Bearing Separator
LS-60-02	Legs for Press-Puller (PR)
08-740	1 1/4-12F x 1-14M Adapter (2)
08-742	1 5/8-5 1/2F x 1-8M Adapter
08-743	1 5/8-5 1/2F x 1-14M Adapter

Wt. 576 lbs.

HYDRAULIC PRESS PULLERS

For superior leverage and even distribution of force.

Reduce down time by having the best tool available for removing and installing gears, bearing, pulleys, shafts, and other press fitted parts. Bearing Puller Attachments, Internal Pullers, Adapters, and a variety of leg lengths make **HYDRAGRIP PRESS-PULLERS** the ideal tool for pushing or pulling.

FEATURES

- Ideal for the removal and installation of a wide variety of press-fit parts
- Select from 20, 30, and 60-ton units
- Complete selection of accessories extends flexibility
- May be ordered as individual components, press puller/cylinder units, or complete operating sets consisting of press puller, cylinder, coupling, six-foot hydraulic hose and hydraulic hand pump or portable power pump

PHS-20-02 – 20 Ton Hydraulic Press-Puller

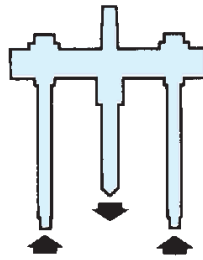
Complete with pump, hose, ram, adjusting screw, crank handle, and 08-587 16 1/2" leg ends have 5/8"-18 threads.

PHS-30-02 – 30 Ton Hydraulic Press-Puller

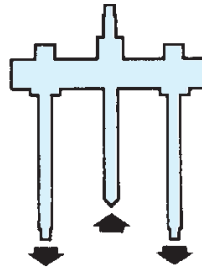
Complete with pump, hose, ram, adjusting screw, crank handle, and 08-592 18" leg ends have 1"-14 threads.

PHS-60-02 – 60 Ton Hydraulic Press-Puller

Complete with pump, hose, ram, adjusting screw, crank handle, and 07-368 24" leg ends have 1 1/4"-12 threading



Ram below cross block causes adjusting screw to push.



Ram above cross block causes adjusting screw to pull.



PH-20-02



PH-30-02



PH-60-02



HP-150



HP-55

SPECIFICATIONS

Rated Load (ton)	Spread (in)	Maximum Reach Under Cylinder (in)	Type of Hand Pump*	Type of Cylinder	Weight (lb)	Model Number
20	4 3/4 to 12 3/4	9 11/16	–	‡	25	P-20-02
20	4 3/4 to 12 3/4	9 11/16	–	RC-20-CH-3ST	49	PH-20-02
20	4 3/4 to 12 3/4	9 11/16	HP-55	RC-20-CH-3ST	66	PHS-20-02
30	8 1/2 to 16 3/4	10 7/8	–	‡	41	P-30-02
30	8 1/2 to 16 3/4	10 7/8	–	RC-30-CH-2.5ST	65	PH-30-02
30	8 1/2 to 16 3/4	10 7/8	HP-55	RC-30-CH-2.5ST	82	PHS-30-02
60	8 1/2 to 20 1/2	14 1/2	–	‡	122	P-60-02
60	8 1/2 to 20 1/2	14 1/2	–	RC-60-CH-3ST	184	PH-60-02
60	8 1/2 to 20 1/2	14 1/2	HP-150	RC-60-CH-3ST	214	PHS-60-02

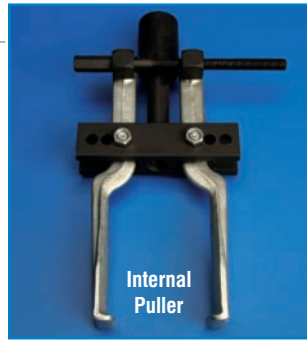
‡ Use cylinder with following specifications:

Rated Load (ton)	Model Number	Cylinder Mounting Thread	Internal Saddle Thread
20	RC-20-CH-3ST	(2) 3/8"-16 on 3 1/4" centers	1"-8
30	RC-30-CH-2.5ST	(2) 3/8"-16 on 3 3/8" centers	1 1/4"-7
60	RC-60-CH-3ST	(2) 1/2"-13 on 5 1/8" centers	1 3/8"-5 1/2

HYDRAULIC PULLER ACCESSORIES

INTERNAL PULLERS

- Can be used with 20 and 30-ton press pullers
- Removes bearing cups, sleeves, bushings and other objects from blind holes
- Prevents damage to internal parts
- Three-hole hub adjustment provides wide spread range

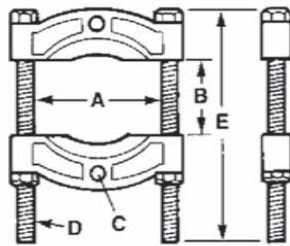


SPECIFICATIONS

For Rated Load Puller/Press Puller (ton)	Spread (in)		Reach (in)	Weight (lb)	Model Number
	Min.	Max.			
20 Ton	1 1/2	6	4	4	IP-20-02
30 Ton	3	9	5 5/8	14	IP-30-02

BEARING SEPARATORS

- Used with two-arm puller and press pullers
- Easily removes bearing, pulleys, cone-shaped gears and other hard-to-grip parts
- Thin, beveled jaw edges can wedge behind hard-to-reach areas



SPECIFICATIONS

For use with the puller capacities listed below	Dimensions (in)					Weight (lb)	Model Number
	A	B		C	D		
		Min.	Max.				
20 Ton	6	1/2	5 3/4	5/8-18	3/4	10 3/4	BS-20-02
30 Ton	7 3/8	5/8	8	1-14	7/8	14 1/4	BS-30-02
60 Ton	13	1 1/4	10	1 1/4-12	1 1/2	18	BS-60-02

PUSHING ADAPTERS

- Easily converts hydraulic pullers for pushing applications

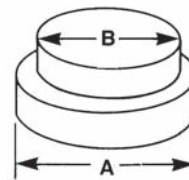


SPECIFICATIONS

For Rated Load Press Puller (ton)	Diameter (in)	Weight (lb)	Model Number
20	1/2	1	HA-113
20	3/4	1	HA-114
30	3/4	1	HA-115
30	1	1	HA-116
60	1	1	HA-117
60	1 1/4	1	HA-118

STEP PLATE SETS

- For use on press puller forcing screw when shaft has hollow end
- Both sets fit all models



SPECIFICATIONS

Number Included in Set	Diameter "A" (in)	Diameter "B" (in)	Weight (lb)	Model Number
1	1	3/4	3	HA-110
1	1 1/8	7/8		
1	1 1/4	1		
1	1 1/2	1 1/8		
1	1 5/8	1 1/4		
1	1 3/4	1 1/2		
1	2	1 5/8		
1	2 1/8	1 3/4		
1	2 1/4	1 7/8		
1	2 1/2	2		
1	2 3/8	2 1/8	3	HA-111
1	2 1/2	2 1/4		
1	2 3/4	2 3/8		
1	3	2 1/2		
1	3 1/4	2 3/4		
1	3 1/2	3		

HYDRAULIC PULLER ACCESSORIES

LEG SETS

- Permit adaptability to a greater range of tasks



Leg Set

SPECIFICATIONS

For Rated Load Press Puller (ton)	Set Includes	Weight (lb)	Model Number
20	Two female adapters $\frac{5}{8}$ " - 18 x $\frac{3}{4}$ "-16, Leg lengths of 4½, 9½, and 22½ inches	17	LS-20-02
30	Two female adapters 1" - 14 x 1"-14, Leg lengths of 8 and 28 inches	32	LS-30-02
60	Two leg , 34 inches long	47	LS-60-02

MALE ADAPTER SETS

- For use on press puller legs or forcing screw when parts have tapped holes



Male Adapter Set

SPECIFICATIONS

For Rated Load Press-Puller (ton)	Number Included in Set	Male End (in)	Female End (in)	Length (in)	Weight (oz)	Weight (lb)	Model Number
20	2	½-13	¾-18	2¼	5	5	HA-102
	2	¾-11	¾-18	2¼	5		
	2	¾-16	¾-18	2¼	5		
	2	¾-10	¾-18	2¼	5		
	2	7/8-9	¾-18	2¼	6		
	2	1-14	¾-18	2¼	6		
	1	¾-18	1-8	3½	16		
	1	1-14	1-8	3½	18		
30	2	¾-11	1-14	2½	9	3	HA-103
	2	¾-18	1-14	2½	7		
	2	¾-16	1-14	2½	10		
	2	¾-10	1-14	2½	10		
	1	¾-18	1¼-7	4	20		
60	1	1-14	1¼-7	4	24	3	HA-104
	2	1-14	1¼-12	4½	28		
	2	1¾-12	1¼-12	4½	40		
	1	1-14	1¾-5 ½	4	25		
	1	1-8	1¾-5 ½	4	26		

FEMALE ADAPTER SET

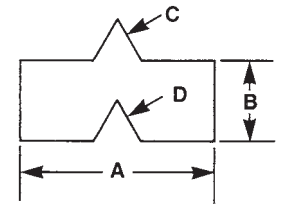
- For use on press puller legs or forcing screw when parts are threaded or have threaded studs
- When used for legs, two sets are required
- Fits all models



Female Adapter

SPECIFICATIONS

Number Included in Set	Size (in)	Weight (oz)	Model Number
1	¾-18 x ¾-18	2	HA-112
1	¾-18 x ¾-16	3	
1	¾-18 x 7/8-14	4	
1	¾-18 x 1-14	5	
1	¾-18 x 1 1/8-12	7	
1	¾-18 x 1 1/4-12	7	
1	¾-18 x 1 1/2-12	13	



SHAFT PROTECTOR SET

- For use between forcing screw and shaft end to protect shaft
- Fits all models



Shaft Protector

SPECIFICATIONS

Number Included in Set	"A" (in)	"B" (in)	"C" 60° M (in)	"D" 60° F (in)	Weight (lb)	Model Number
1	1½	¾	¾	7/16	3	HA-105
1	1¼	¾	¾	¾		
1	1	¾	¾	5/16		
1	¾	¾	¼	¼		
1	5/8	5/8	¼	¼		
1	5/8	5/8	3/16	3/16		